



Project: _____
 Location: _____
 Cat. #: _____
 Type: _____
 Quantity: _____

ADB 7000-P | Portable Air Disinfection Biosecurity Unit

Features:

- 24/7 365 continuous and proactive air and surface disinfection in a portable unit
- Provides a comprehensive disinfection solution for use in public spaces to achieve a new air quality safety threshold by neutralizing up to 99.99% of viruses (influenza, norovirus, etc.) within minutes and bacteria (listeria, salmonella, E. coli, campylobacter, etc.) within 2 hours.
- No toxic chemicals or irradiation
- Used for over 20 years and is installed in thousands of locations, worldwide

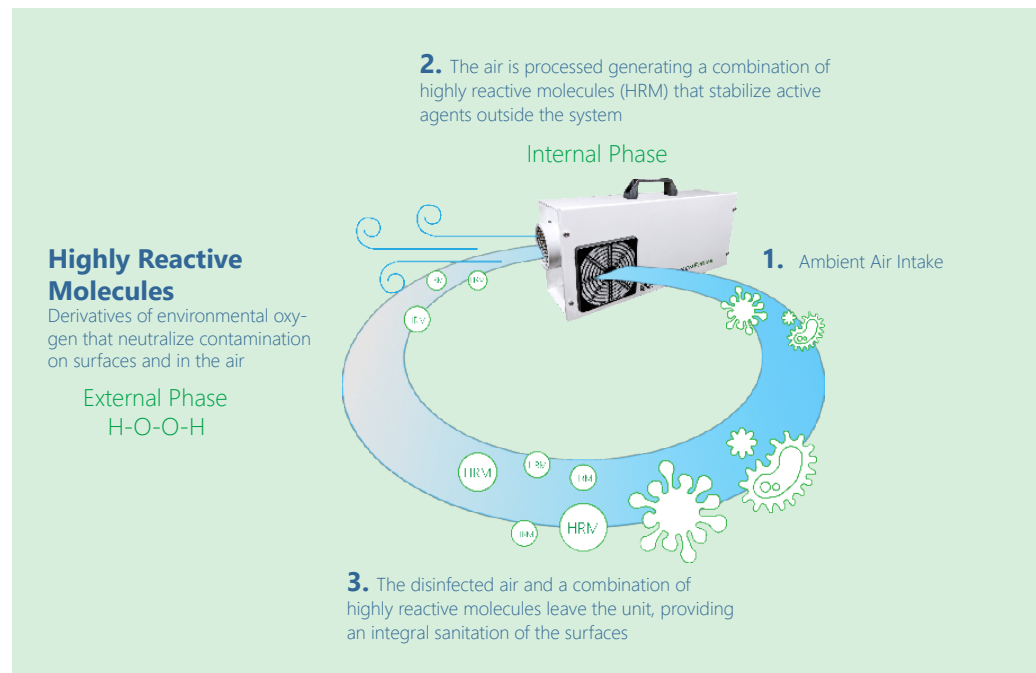
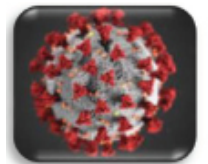
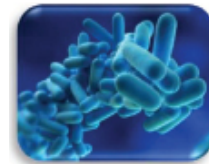
Applications:

Suitable for common area applications - indoor/public spaces

- Government Buildings
- Hospitality
- Healthcare
- Fitness/Locker Rooms
- Food/Meat Processing
- K12/Higher Education
- Offices
- Meeting Room/Break Rooms
- Industrial/Commercial
- Restaurants
- Retail
- Buses
- Subways
- Freight

Details:

- Plug & play
- Chemical-free technology rapid & continuous action
- Low power consumption



Ordering Guide:

Series	-	Model
ADB 7000	-	1TP
ADB 7000		1TP

Specifications:

Model	Operation Frequency	Amps	Max Power	Voltage	Weight	Length	Width	Height	Noise Level
ADB 7000-1TP	50/60 Hz	0.5 A	0.06 kW	120V	20 lbs.	18.5 in	5.25 in.	8 in.	<40 dB

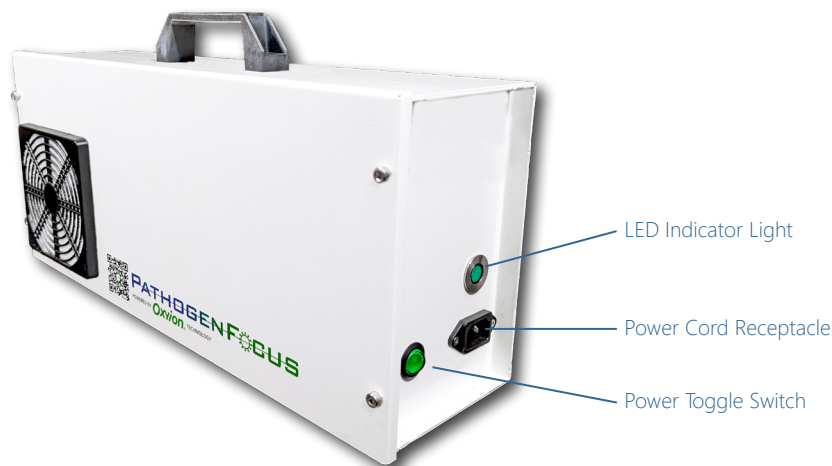
Performance Capacity:

Model	Air Volume (Typical)	Air Volume (Industrial Processes)	Turbine CFM
ADB 7000-1TP	up to 18,250 ft ³	up to 5,900 ft ³	20 - 80

Performance capacity is just a guideline. ADB system design is application specific and depends on many factors, including existing bio load of the environment as well as what you are trying to achieve (improved air quality, odor elimination, food safety, increased shelf life of perishables, increased crop yield, etc.)

Operation:

Put the unit on a shelf about 60 or more inches from the ground and plug it into a 120V outlet. Set the toggle switch, located on the side of the unit, to the 'on' position to power up the unit. A green indicator light will illuminate to signal the unit is operating and the turbine will start running. Depending on the application, a standing fan near the output of the unit may be needed to help distribute the sanitation throughout the space. Always leave the system placed at least 4 feet away from occupants.



User Guide

No part of this document may be used for any purpose other than the purposes specifically indicated herein nor may it be reproduced or transmitted in any form or by any means, electronic, or mechanical, including photocopying and/or recording for any purpose without permission from the manufacturer.

This information appearing in this document is for general purposes only. The manufacturer makes no warranty of any kind with regard to the information appearing in this document including, but not limited to, implied warranties of merchantability and/or fitness for particular use or purpose. The manufacturer assumes no responsibility for the results, direct and/or indirect, of any misuse of the information appearing in this document nor for any use of the manufacturer product offering referred to herein in any manner deviating from the recommendations made in this document. The manufacturer assumes no responsibility for the use of any parts, components, or other ancillary appliances including circuitry other than as recommended hereunder or other than that embodied in the product.

Guidelines For User Safety And Equipment

Protection symbols are used to highlight information relating to the user’s personal safety and protection of the equipment throughout this guide. Do not operate the equipment without prior consulting with a representative.

When any of the following symbols appear, the associated information must be read carefully and understood fully. Avoid getting too close to the output of the system. When the equipment is in operation, stay a minimum of 4 feet away from the output. Depending on the application, a standing fan near the output of the unit may be needed to help distribute the sanitation throughout the space.

Warnings



WARNING

The identified danger can cause physical and property damage



DANGER

The identified danger can cause severe physical and property damage. This symbol relates specifically to electrical danger.

Under no circumstances will the manufacturer be liable or responsible for any consequential damage that may arise as a result of the installation or use of this equipment. All examples and diagrams shown in this guide are intended to aid understanding. They do not guarantee operation. The manufacturer accepts no responsibility for the actual use of this equipment based on these examples.

Due to the great variety of possible applications for this equipment, the user must assess the suitability of this product for specific applications.

Equipment described herein is recommended based on the room temperature, type of process, the air circulation of the room, and overall size of the room. The user of this product further acknowledges that in order for the equipment to achieve optimal results, there must be sufficient air circulation, a somewhat enclosed treated area, and when applicable, proper ventilation in the packaging of stored/palletized product(s).

